

# THE NEWSBOY

News for Members of San Luis Valley Rural Electric Cooperative



## WELCOME KEENAN ANDERSON

Keenan Anderson is fourth-generation from right here in the San Luis Valley. He knows these lands and has worked them on his family farm for the past 12 years in his own operation. Keenan knows what it means to be committed to farming and ranching. He has welded and a raised cattle to get where he is today; he understands that hard work is the way to reach your goals.

Keenan knew he would like to be on the board of REC to represent the county of Saguache. He wants to bring what he can from the county and, of course, learn what he can from the board. Keenan believes he brings a diverse perspective that incorporates both farming and ranching. As a board member he is ready for the learning and challenges ahead, as he embarks on his journey.

REC is pleased to welcome Keenan Anderson to the board of directors. We are sure he will bring new and helpful views to our already progressive board.

### THIS ISSUE

Welcome Keenan Anderson

Cooperative Month

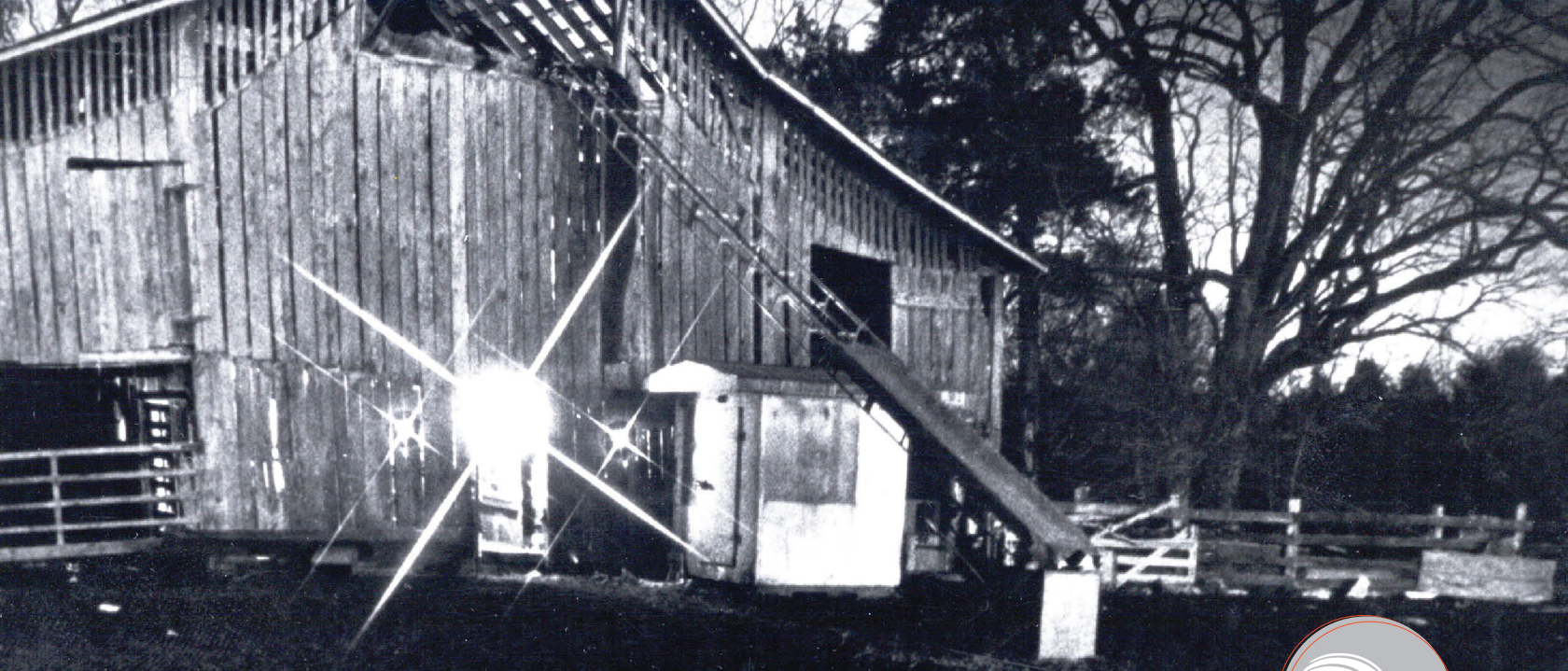
Loren Howard

Company News

Recipes of the Month

OCTOBER 2016 | VOLUME 41 | ISSUE 10





# COOPERATIVE MONTH



Being part of a cooperative means being part of something special. San Luis Valley REC is celebrating National Cooperative Month in October, along with 40,000 other cooperative businesses serving more than 120 million people nationwide.

“Cooperatives Build” is the theme of this year’s National Cooperative Month. “This year’s theme is excellent, because there are so many ways that cooperatives help to build a stronger rural America,” says Andrea Oaks-Jaramillo, Marketing & E.D. Coordinator. Consider these ways that our co-op has built:

- Providing affordable and reliable electricity to the San Luis Valley since 1937.
- The Energy Foundation providing weatherization help and electric bill payment assistance to our members.
- The implementation of Ciello powered by REC to provide world-class internet and telephone service to the residents of the San Luis Valley.

## **Cooperatives Build Trust**

Most co-ops strive to adhere to seven key cooperative principles, which combine to help build trust between the co-op, its members and the community. For example, the first principle is Voluntary and Open Membership, which means that we are a voluntary organization open to all people who wish to use our services and who are willing to accept the responsibility of membership. The second principle, Democratic Member

Control, gives members a voice in the cooperative’s policies and decisions. Through the fifth principle — Education, Training and Information — we enable members to contribute to the development of our cooperative. We always welcome ideas and input from the membership. We have been especially appreciative of the membership engaging with us via Facebook.

## **Cooperatives Build Community**

The seventh cooperative principle is Concern for Community. Cooperatives work for the sustainable development of their communities through employee involvement in local organizations, through charitable contributions to community efforts and through support for schools. REC offers 12 different scholarships to all of the schools around the San Luis Valley.

## **Cooperatives Build Jobs**

Cooperatives generate jobs in their communities; keep profits local and pay local taxes to help support community services. Cooperatives often take part in community improvement programs, ensuring that everyone has an opportunity to benefit from the cooperative experience.

## **Cooperatives Build a Better World**

Through all of the above ways, cooperatives build a better world. Our vision is to help fortify the San Luis Valley with economic development through REC and Ciello.



## LOREN HOWARD

### Penitente Solar Project

By 2020, electric cooperatives in Colorado must have 20% of the kilowatt hours they sell come from renewable energy sources such as solar and wind. Currently, Colorado law requires electric cooperatives to supply 6% of its electricity from renewables, which continues through 2019 but then jumps to the 20%. San Luis Valley REC has a long term contract with Tri-State Generation and Transmission to supply the electricity to REC. The terms of the contract with Tri-State allow REC to self-supply up to 5% of its kilowatt hours. Tri-State has done and continues to do an excellent job of supplying the renewable energy required by Colorado law and is easily in position to meet the 2020 requirement of 20% renewable energy.

While recognizing the work that Tri-State has done to meet the renewable energy required by Colorado law, REC members have shown increased interest in the past several years in having access to local renewable energy. Buying or acquiring renewable energy credits from wind, solar or other renewable energy projects outside the San Luis Valley is less attractive than local projects.

REC has been engaged with several renewable energy developers for at least three years and finally, earlier this year, selected a developer, RES-Americas, to build, own and operate a 2.75 MW solar facility in the San Luis Valley. This photovoltaic solar system will be located

in the Valley and will connect to REC's electric distribution system providing locally generated electricity at a very attractive price.

By the end of October, all the preliminary work necessary to begin construction of this project should be complete, including purchasing land, performing the needed geotechnical studies and acquiring the needed permits. Excavation and ground work should be complete before the frost sets in too deep, and above-ground work would then continue through the winter. The project has an anticipated commercial operation date of July 2017 and will supply approximately 7,000 megawatt hours of electricity annually or 3.7% of REC's annual electricity requirements.

REC also has an existing power purchase agreement with a small hydro-electric generating facility, which supplies about 0.7% of REC's electricity.

Renewable energy technology has driven the cost of solar and wind down over the past several years and has become an attractive generation resource, even for small electric utilities like REC. While wind and solar are intermittent resources and require some work to integrate into the electric grid, these resources are diversifying the generation of electricity.

#### BOARD OF DIRECTORS

Cole Wakasugi, President  
719-379-2629

Carol Lee Dugan, Vice President  
719-852-5412

Scott Wolfe, Secretary  
719-852-0966

Mike Rierson  
719-754-2588

Rick Inman  
719-658-2455

Eleanor Valdez  
719-274-5680

Keenan Anderson  
719-992-1857

Email: [power@slvrec.com](mailto:power@slvrec.com)

Your email will be forwarded based on the direction you provide in your subject line.

#### CEO

Loren Howard  
719-852-6630

SLVREC Office (toll free)  
800-332-7634

SLVREC Office (local calls)  
719-852-3538

#### PUBLISHER'S STATEMENT

The Newsboy (publication #551-450) is an official publication of the San Luis Valley Rural Electric Cooperative, Inc.; 3625 US Hwy 160 W, Monte Vista, CO 81144. The Newsboy is published monthly for SLVREC's members. Periodical postage paid at Monte Vista, CO 81144. Subscription price \$20/year.

Postmaster, send Form 3579 to NEWSBOY, P.O. Box 3625, Monte Vista, CO 81144-3625.

© 2016 San Luis Valley Rural Electric Cooperative. All rights reserved.



[www.facebook.com/SLVREC](http://www.facebook.com/SLVREC)



[www.twitter.com/SLVREC](http://www.twitter.com/SLVREC)



Source: [energy.gov](http://energy.gov)



<b>UNITED STATES POSTAL SERVICE®</b> (All Periodicals Publications Except Reader Service Publications)		<b>Statement of Ownership, Management, and Circulation</b> <b>For Mailing at Special Rate of \$1.00 per copy per month</b>	
<b>16. Electronic Copy Circulation</b>	<b>Average No. Copies Each Issue During Preceding 12 Months</b>	<b>No. Copies of Single Issues Published Nearest to Filing Date</b>	
a. Paid Electronic Copies	▶ 427	427	
b. Total Paid Print Copies (Line 15c + Paid Electronic Copies (Line 16a))	▶ 7581	7581	
c. Total Paid Distribution (Line 15b + Paid Electronic Copies (Line 16a))	▶ 7581	7581	
d. Percent Paid (both Print and Electronic Copies) (Line divided by 15c + 16a)	▶ 100%	100%	
<p><b>I certify that 50% of all my distributed copies (electronic and print) are paid above a nominal price.</b></p>			
<b>17. Publication of Statement of Ownership</b>			
<p><input checked="" type="checkbox"/> This publication is a general publication; publication of this statement is required. See printed notice on October 2016 issue of this publication.</p>		<input type="checkbox"/> Publication not required.	
<b>18. Signature and Title of Publisher, Business Manager, or Owner</b>		<b>Date</b>	
<p><i>[Signature]</i></p>		<p>9/15/16</p>	
<p><small>I declare under penalty of perjury that the information on this form is true and complete. I understand that anyone who furnishes false or misleading information on this form or who omits material or information requested on the form may be subject to criminal sanctions (including fines and imprisonment) and/or civil sanctions (including civil penalties).</small></p>			

Form 3526, 1-15-16 (Rev. 10-15-16) 3-0-16

**PRIVACY NOTICE:** See the privacy policy on www.usps.gov



## RECIPES OF THE MONTH

### INGREDIENTS

6 tablespoons (3/4 stick) unsalted butter, divided  
 2 tablespoons extra-virgin olive oil, divided  
 1 small yellow onion, finely chopped (about 1 cup)  
 Kosher salt, freshly ground pepper  
 3 garlic cloves, finely chopped  
 1/4 cup dry white wine  
 1 pound chanterelles, brushed clean (halved if large)  
 1/2 cup heavy cream  
 1/4 teaspoon of freshly grated nutmeg  
 1 teaspoon fresh oregano plus more for garnish  
 Fresh lemon juice  
 1/4 pound pappardelle, cooked al dente, or 1 pound boiled new potatoes

### Fricassee Of Chanterelles

Melt 3 tablespoons butter with 1 tablespoon oil in a large skillet over medium-high heat. Add onion, season with salt and pepper, and cook, stirring occasionally, until softened and lightly golden, 4-5 minutes. Add garlic and cook for 1 minute. Stir in wine and cook until liquid is reduced by half, about 2 minutes. Add remaining 3 tablespoons butter, remaining 1 tablespoon oil, and mushrooms. Cook, stirring occasionally, until mushrooms are lightly golden, about 5 minutes. Add cream and nutmeg and cook until slightly thickened, about 2 minutes. Stir in 1 teaspoon oregano. Season to taste with salt, pepper, and lemon juice. Toss in a skillet with cooked pasta, or serve over smashed boiled potatoes. Garnish with more oregano.

### INGREDIENTS

Unsalted butter, room temperature, for buttering dish  
 1 can (15 ounces) pure pumpkin puree  
 1 cup whole milk  
 1/2 cup heavy cream  
 2 large eggs, lightly beaten  
 1/4 cup light-brown sugar  
 1/2 teaspoon coarse salt  
 3/4 teaspoon pure vanilla extract  
 1/2 teaspoon ground cinnamon  
 1/2 teaspoon anise seed, roughly chopped  
 10 ounces day-old bread, such as brioche or sourdough, cut into 1/2-inch slices or 1-inch cubes  
 1/2 cup pecans, roughly chopped  
 1 cup homemade **Dulce de Leche**\*, or store-bought, warmed

### Pumpkin Bread Pudding with Dulce de Leche

Preheat oven to 350°F. Butter a 2-quart baking dish. In a large bowl, whisk together pumpkin puree, milk, cream, eggs, brown sugar, salt, vanilla, cinnamon, and anise seed. Arrange bread in dish. Pour custard over bread and top with pecans. Bake until custard is set, 45 minutes. Let cool slightly. Serve warm or at room temperature, drizzled with dulce de leche\*.

#### \*Dulce de Leche

6 cups whole milk  
 1 1/2 cups sugar  
 1/4 teaspoon coarse salt  
 3/4 teaspoon baking soda

In a medium saucepan, bring milk, sugar, and salt to a simmer over medium heat. Remove from heat and whisk in baking soda (mixture will foam). Return to a simmer and cook over low, stirring occasionally and skimming off any foam, until sauce is deep golden brown and lightly coats a spoon, 45 minutes to 1 hour. Pour through a fine-mesh sieve into a heatproof bowl.



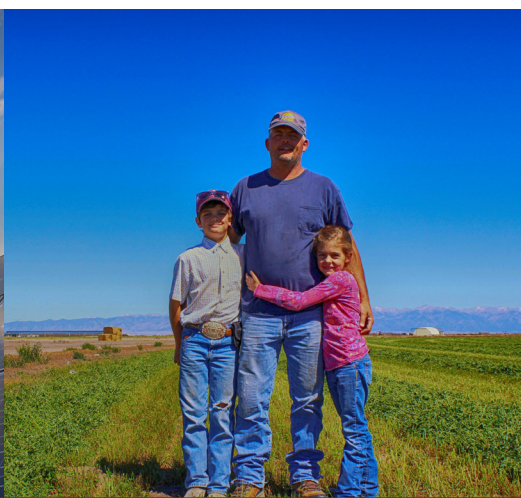


Periodical Postage  
Paid at Monte Vista, CO

## POWERING A VITAL VALLEY

P.O. Box 3625  
Monte Vista, CO 81144

October 2016



## POWERING OUR COMMUNITY

SLVREC's office is open from 7 a.m. to 5 p.m.  
Monday through Thursday.  
The office is closed Friday through Sunday.

### ENERGY ASSISTANCE

866-HEAT HELP (866-432-8435)  
[www.energyoutreach.org](http://www.energyoutreach.org)

### SCHEDULED MEETINGS

Board Meeting October 25 @ 9:30 a.m.  
The Board of Directors meets the last Tuesday of each  
month unless otherwise stated. Members are welcome.

This institution is an equal opportunity employer.



Your Touchstone Energy<sup>®</sup>  
Cooperative

