

# THE NEWSBOY

News for Members of San Luis Valley Rural Electric Cooperative

As excitement builds within SLVREC and the community, we thought it was important to bring a Cielo Powered by SLVREC progress report to the membership. In January of this year, we began the installation of FTTH (Fiber to the Home) in the South Fork area.

We are making great headway in many different areas of the South Fork build in residential and commercial installations. We currently have 39 active consumers, with an additional 115 slated for installation in the near future.

Our installers, in conjunction with our customer service team are working diligently to contact and schedule consumers eager for the Cielo services. The goal is to have the majority of construction in the South Fork area by September of 2015.

Cielo is providing crystal-clear phone service and cutting-edge internet speeds to the area. Our goal, as always, is to surpass not only the competition, but our own expectations. We, of course, do all of this with the members' needs in mind and will continue to look for ways to improve our services in the San Luis Valley.

Join us on June 4 at Holiday RV from 8 a.m. to 3 p.m. for the Summer Kickoff Event. Enjoy hot dogs, cookies and super-fast Internet.



## South Fork - A Beautiful Day in the Gig-a-Hood



### THIS ISSUE

A Beautiful Day in the Gig-a-hood

Welcome Our New Employees

Loren Howard

Feathered Friends

Recipes of the Month

JUNE 2015 | VOLUME 40 | ISSUE 6



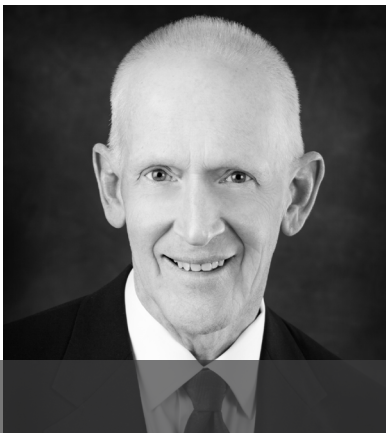


## Welcome Ernesto Villalba and Jaclyn Shreeve

Ernesto Villalba came to us from CenturyLink, where he had been a network technician for the past 16 years. Ernesto will be filling the role of telecommunication technician for SLVREC. We are very pleased to have Ernesto, with his many years of experience and unique skill set. His goal is to help build the fiber infrastructure and provide the best possible Internet and telephone service in the Valley.

We are pleased to bring Jaclyn Shreeve on board in the role of accountant. Jaclyn comes to us from Rio Grande Savings and Loan. She received her bachelor's in business with an emphasis in accounting in December of 2014. As an Alamosa native, Jaclyn enjoys the mountains and fishing. Her goal with SLVREC is to further her knowledge of the cooperative world and hone her accounting skills.





## LOREN HOWARD

### Visioning

“Being forward-looking, envisioning exciting possibilities and enlisting others in a shared view of the future - is the attribute that most distinguishes leaders from nonleaders. We know this because we asked followers.” James M. Kouzes and Barry Posner

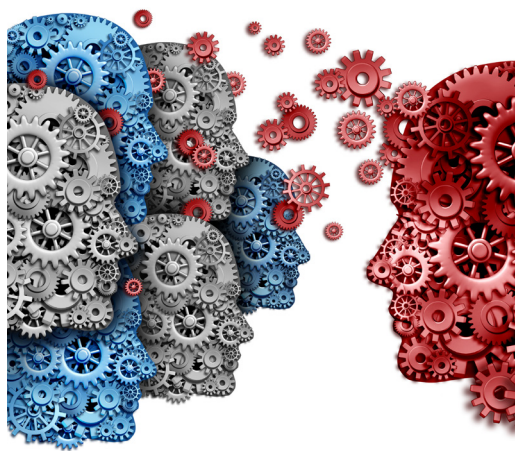
At SLVREC we strive for growth, excellence and committed service to the membership. We believe in cultivating leaders in our organization. This not only means a good and effective management team, but it also means empowering employees to have a voice.

The REC believes in a culture that carries outside of our work lives and into our community. My hope is to provide a place where employees grow personally and professionally while giving back to the community we serve.

Becoming a learning organization is the next phase in our growth at SLVREC. We believe that in order to best serve the membership, we must continue to help our employees learn. To stay current in an ever-changing world an organization must continually learn and transform.

True to our cooperative roots, we value our members and the community; so to provide the best service we can, we must stay ahead of the curve. I believe in facilitating and empowering employees at all levels so they are able to meet the needs of the membership.

SLVREC is a cooperative that is about giving back to the community and helping to secure a brighter vision for our future generations. We are all happy to do our part here in the San Luis Valley.



#### BOARD OF DIRECTORS

Scott Wolfe, President  
719-852-0966

Cole Wakasugi, Vice President  
719-379-2629

Ernie Ford, Secretary  
719-588-0255

Carol Lee Dugan  
719-852-5412

Mike Rierson  
719-754-2588

Rick Inman  
719-658-2455

Eleanor Valdez  
719-274-5680

E-mail: [power@slvrec.com](mailto:power@slvrec.com)

Your e-mail will be forwarded based upon the direction you provide in your message.

#### CEO

Loren Howard  
719-852-6630

SLVREC Office (toll free)  
800-332-7634

SLVREC Office (local calls)  
719-852-3538

#### PUBLISHER'S STATEMENT

*The Newsboy* (publication #551-450) is an official publication of the San Luis Valley Rural Electric Cooperative, Inc.; 3625 US Hwy 160 W.; Monte Vista, CO 81144. *The Newsboy* is published monthly for SLVREC's members. Periodical postage paid at Monte Vista, CO 81144. Subscription price \$20/year.

Postmaster, send Form 3579 to NEWSBOY, P.O. Box 3625, Monte Vista, CO 81144-3625.

© 2013 San Luis Valley Rural Electric Cooperative. All rights reserved.



[www.facebook.com/SLVREC](http://www.facebook.com/SLVREC)



[www.twitter.com/SLVREC](http://www.twitter.com/SLVREC)





## COMPANY NEWS

### Feathered Friends

Veteran serviceman Charlie Booth received an outage call for a three-phase service. Upon arriving on the scene everything seemed par for the course. When Charlie ventured up in the bucket to restore the service, he heard a noise. On the other side of the bank of transformers was a nest with a baby owl. Charlie then disconnected the service to prevent any harm to the baby owl and its mom. Charlie came up with the idea to build a perch onto an existing pole. He contacted Saguache area Division of Wildlife officer Jason Surface to move the nest and baby owl. To date, mommy and owlet are enjoying their new location.



## CONSERVATION CORNER

### Commercial Energy-Saving Tips

There are numerous no-cost and low-cost ways to save energy. Here are just a few:

- Turn off lights and office equipment at night and when not in use.
- Keep windows and doors closed to prevent air loss.
- Check for proper insulation throughout the building.
- Clean and replace light fixtures.
- Regularly clean or replace the filters in your heating and cooling system.
- Adjust HVAC temperature settings. Changing one degree can reduce heating and cooling costs by 2 to 4 percent.
- Review your usage pattern. Adjustments in operation can result in savings on your utility bill.
- Contact your local Touchstone Energy cooperative for information on available rates.
- Turn off display case and other lighting when not in use.
- Switch from incandescent to compact fluorescent lamps in canisters or recessed fixtures.
- Replace fixtures using T-12 fluorescent lamps with new ones using T-8 lamps and electronic ballasts.
- Replace metal halide lamps with T-8 or T-5 fluorescent lamps.
- New LED lighting offers higher efficiency and longer life than incandescent and fluorescent. Consider switching. Your co-op can keep you informed on new lighting systems coming to market.
- Use T-8s and LEDs to light display cases.
- Use LEDs for exit lighting.
- Install motion-activated light switches.

For more information visit: [https://www.cooperative.com/InterestAreas/TouchstoneEnergy/residential/ebrochures/Documents/TE\\_Savings\\_guide.pdf](https://www.cooperative.com/InterestAreas/TouchstoneEnergy/residential/ebrochures/Documents/TE_Savings_guide.pdf)



## RECIPES OF THE MONTH

### INGREDIENTS

8 to 12 ounces marinated goat cheese or feta,  
broken into large chunks  
2 to 3 teaspoons olive oil  
4 to 5 sprigs fresh thyme  
½ teaspoon whole pink peppercorns  
Sliced baguette or crackers for serving

### Easy Goat Cheese Appetizer

Place cheese in a small ovenproof dish, and bake at 325 degrees for 15 to 20 minutes until golden brown. Remove the dish from the oven, drizzle with olive oil, and garnish with fresh thyme (if desired) and whole pink peppercorns. Serve with sliced baguette or crackers.

### INGREDIENTS

1 15-ounce can chickpeas, rinsed  
½ English cucumber, thinly sliced  
½ cup torn basil leaves  
1 small shallot, thinly sliced  
2 tablespoons olive oil  
2 teaspoons sherry vinegar or red wine vinegar  
kosher salt and black pepper  
2 tablespoons sesame seeds  
2 teaspoons paprika  
8 bone-in, skinless chicken thighs  
(about 2 ½ pounds)

### Spiced Chicken With Chickpea and Cucumber Salad

In a medium bowl, toss the chickpeas, cucumber, basil, and shallot with the oil, vinegar, and ¼ teaspoon each salt and pepper.

Heat grill to medium. In a small bowl, combine the sesame seeds, paprika, ½ teaspoon salt, and ¼ teaspoon pepper.

Sprinkle the chicken with the sesame seed mixture, pressing gently to help it adhere. Grill, covered, until cooked through, 9 to 10 minutes per side. Serve with the chickpea salad.



### Fruit-Tart Flag

Fill premade miniature tart shells or phyllo cups with sweet mascarpone cream (recipe below), then arrange on a tray and top with blueberries and halved strawberry slices to create stars and stripes.

#### Mascarpone Cream:

Beat an 8-ounce container of mascarpone cheese and 3 tablespoons confectioners' sugar with a mixer until smooth. Gently fold in ½ cup freshly whipped cream.





Periodical Postage  
Paid at Monte Vista, CO

P.O. Box 3625  
Monte Vista, CO 81144

**June 2015**



## POWERING OUR COMMUNITY

SLVREC's offices are open from 7 a.m. to 5 p.m.  
Monday through Thursday.  
Offices are closed Friday through Sunday.

### ENERGY ASSISTANCE

866-HEAT HELP (866-432-8435)  
<http://www.energyoutreach.org>

### SCHEDULED MEETINGS

Board Meeting June: Annual Meeting  
The Board of Directors meets the last Tuesday of each  
month unless otherwise stated. Members are welcome.

*This institution is an equal opportunity employer.*

## San Luis Valley Rural Electric Cooperative



## Walking the Walk

**Annual Meeting 2015**

**June 9, 2015**

**7 p.m.**

**@**

**Rodeway Inn, Alamosa**



Your Touchstone Energy® Cooperative  
*The power of human connections®*