

THE NEWSBOY

News for Members of San Luis Valley Rural Electric Cooperative



THIS ISSUE

Annual Meeting 2015

Loren Howard

ETS Service Update

Recipes of the Month

Annual Meeting - Power Makes It Possible

JULY 2015 | VOLUME 40 | ISSUE 7



Walking the Walk - Annual Meeting 2015

San Luis Valley Rural Electric Cooperative has filed away another Annual Meeting in the books. We are pleased to announce, we had approximately 200 people in attendance, with a quorum of 72 members.

Our guest speakers were Jennifer Goss with Tri-State G&T and Geoff Hier with CREA. Jennifer Goss provided valuable information on power generation and environmental issues, while Hier informed the membership with a legislative update.

Nearly all of our scholarship recipients were in attendance with their families. Alexis Duran, the Adams State University 4 year scholarship recipient, delivered a moving speech that left few dry eyes in the house.

This year, we did things a little differently in requesting that members write down their questions to be addressed by CEO Loren Howard or the other speakers. This process allowed us to answer more of the members questions here in The Newsboy.

1. One of the pressing questions on everyone's mind was, *What is the status of Ciello?* We plan on having the South Fork area installed by September 2015. We will also be posting an updated fiber map to the Ciello website very soon. This will provide updated information as to when Ciello will be available in your area.

2. *Will there be a seasonal rate for Ciello users?* We are currently investigating the feasibility of seasonal rates. Expect an update within the next few months based upon our findings.

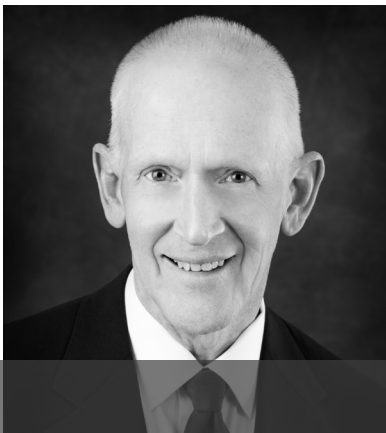
3. *Are there plans for a solar charette this year?* Yes! Last year the charette was postponed due to a conflict with a major solar summit scheduled at the same time. We are in the process of finalizing a time and venue for the charette this year.

4. SLVREC has a great rebate program that includes Energy Star rated residential appliances. This includes clothes washers, dishwashers, refrigerators, and freezers. REC also offers rebates on electric water heaters, LED lighting and ETS heaters. We have additional programs for electric motors, variable speed drives and commercial lighting retrofits. For more information on any of these, please contact our office at (719) 852-3538. SLVREC also works in conjunction with Tri-State on commercial energy audits.

5. We would like to encourage the membership to utilize social media to pose questions or ideas to SLVREC. This is the easiest and quickest format for open discussion. Our Facebook page is San Luis Valley Rural Electric Cooperative or Tweet us at @SLVREC.

Thank you all for your attendance and participation in the 2015 Annual Meeting.





LOREN HOWARD

Who's the New Guy?

By now you've probably noticed the robot-like character that's been popping up lately. He was at our recent annual meeting, and you'll be seeing more of him in our lobby and member communications materials. So, who is he, and what's he all about?

"Power" is the personification - well, robotification, of the work that electricity does in our daily lives. He represents the power that San Luis Valley Rural Electric Cooperative is proud to provide to you, our members. As your electricity provider, we understand just how much you depend on reliable and affordable power in your homes, workplaces, schools and more, and we continually work hard to make sure we deliver it. Even though we all depend on it, sometimes we don't think about just how important power is.

Power's message touches on three important themes. The first—and most important—is our relationship with our members. At SLVREC, you are more than just a customer. We're here solely to serve you and our community, and to ensure that you have the reliable and affordable power you need. That's the cooperative difference.

Second, because we care about our community and our environment, we're committed to delivering power that originates partially from renewable sources. In fact, almost a quarter of the power we provide to our members comes from wind, solar and hydroelectric projects.

Power's third theme is something you've probably heard a lot about over the past few years: energy efficiency. Helping our members save money on their electric bills is a priority for us, which is why we provide energy efficiency tools, solutions and rebates. Power provides a fun and eye-catching way for us to get the word out about energy efficiency.

Stay tuned for more sightings of Power in the coming months. In the meantime, get to know Power by checking out his website, PowerWorksForYou.coop, or by connecting with him on Facebook (Facebook.com/powerworksforyou), Instagram (@powerworks4U) and Twitter (@powerworks4U).



BOARD OF DIRECTORS

Scott Wolfe, President
719-852-0966

Cole Wakasugi, Vice President
719-379-2629

Ernie Ford, Secretary
719-588-0255

Carol Lee Dugan
719-852-5412

Mike Rierson
719-754-2588

Rick Inman
719-658-2455

Eleanor Valdez
719-274-5680

E-mail: power@slvrec.com

Your e-mail will be forwarded based on the direction you provide in your message.

CEO

Loren Howard
719-852-6630

SLVREC Office (toll free)
800-332-7634

SLVREC Office (local calls)
719-852-3538

PUBLISHER'S STATEMENT

The Newsboy (publication #551-450) is an official publication of the San Luis Valley Rural Electric Cooperative, Inc.; 3625 US Hwy 160 W.; Monte Vista, CO 81144. *The Newsboy* is published monthly for SLVREC's members. Periodical postage paid at Monte Vista, CO 81144. Subscription price \$20/year.

Postmaster, send Form 3579 to NEWS-BOY, P.O. Box 3625, Monte Vista, CO 81144-3625.

© 2013 San Luis Valley Rural Electric Cooperative. All rights reserved.



www.facebook.com/SLVREC



www.twitter.com/SLVREC

COMPANY NEWS

ETS Service Update

Streamlining the ETS Service Process

It is important to us to keep our members updated on any processes that are changing at the REC. If an effort to streamline the ETS service process we wanted to provide some updated information.

1) There are two electrical contractors currently on our list to call for the installation and repair of ETS units.

Valley Electric **Mark Hensley** (719) 589-3975

Peak Electric **John Hindes** (719) 850-6225

2) SLVREC will sell ETS units either directly to the member or to the electric contractor. SLVREC does not install the units.

3) Members may contact another contractor (aside from the ones suggested) to install ETS units.

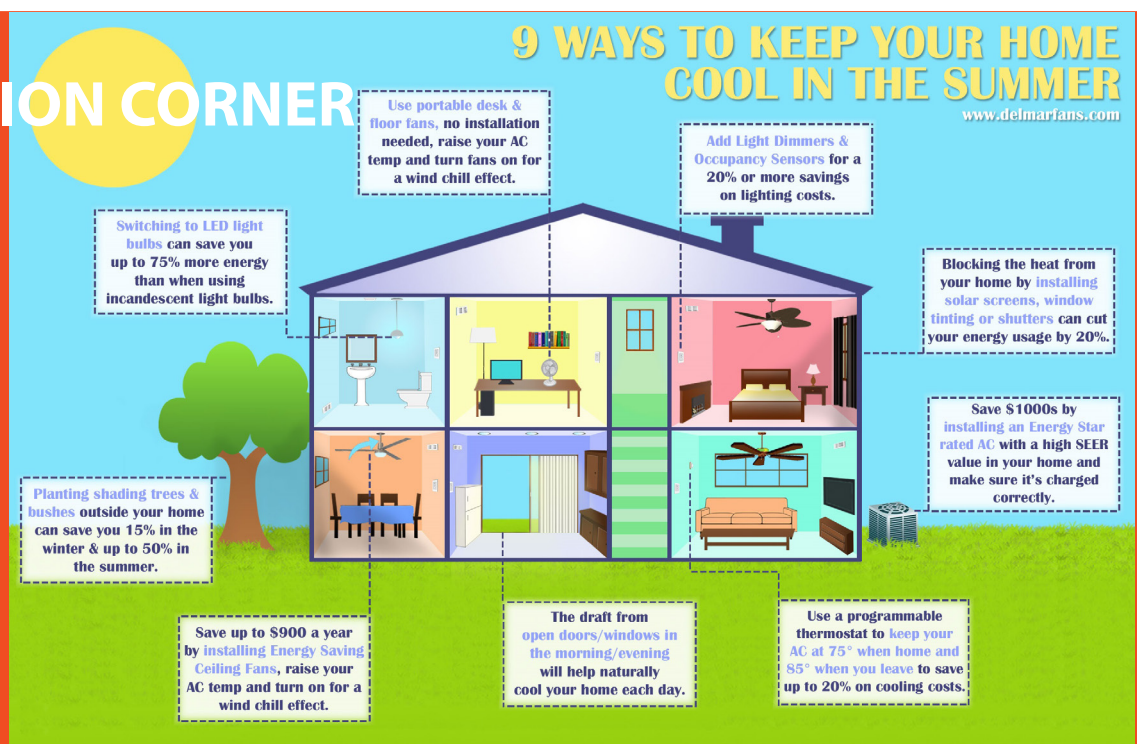
4) If a contractor wants to be on SLVREC's list of contractors, the contractor needs to contact SLVREC.

If you have any additional questions, please feel free to call us at (719) 852-3538.

Members will be provided with both contractor's information.



CONSERVATION CORNER





RECIPES OF THE MONTH



INGREDIENTS

4 pounds fresh raspberries (about 14 cups)
6 cups sugar
4 cups lemon juice
Chilled tonic water or ginger ale
Ice cubes

Raspberry Lemonade Concentrate Recipe

Place raspberries in a food processor; cover and process until blended. Strain raspberries, reserving juice. Discard seeds. Place juice in a Dutch oven; stir in sugar and lemon juice. Heat over medium-high heat to 190°. Do not boil. Remove from heat; skim off foam. Carefully ladle hot mixture into five hot 1-pint jars, leaving 1/4-inch headspace. Wipe rims; screw on bands until fingertip tight. Place jars into canner simmering water, ensuring that they are completely covered with water. Bring to a boil for 10 minutes. Remove jars and cool. To use concentrate: Mix 1 pint concentrate with 1 pint tonic water. Serve over ice. Yield: 5 pints (4 servings each pint).

INGREDIENTS

1 medium onion, chopped
2 tablespoons butter
2 garlic cloves, minced
2 cups fresh or frozen dark sweet cherries, pitted and coarsely chopped
1 cup ketchup
2/3 cup packed brown sugar
1/4 cup cider vinegar
1 tablespoon Worcestershire sauce
2 teaspoons ground mustard
1/4 teaspoon pepper
1/8 teaspoon Liquid Smoke, optional

Cherry Barbecue Recipe

In a large saucepan, saute onion in butter until tender. Add garlic; cook 1 minute longer. Stir in the remaining ingredients. Cook, uncovered, over medium-low heat for 20 minutes or until cherries are tender and sauce is thickened, stirring occasionally. Yield: about 3-1/2 cups.

INGREDIENTS

4-1/2 cups sugar
3/4 cup cornstarch
4-1/2 cups cold water
3 packages (3 ounces each) strawberry gelatin
1 tablespoon lemon juice
6 packages (3 ounces each) cook-and-serve vanilla pudding mix
6 pastry shells (9 inches), baked
3 pounds fresh strawberries, halved
Whipped cream, optional

Strawberry Custard Pies Recipe

In a large saucepan, combine sugar and cornstarch; gradually stir in water until smooth. Bring to a boil; cook and stir for 2 minutes or until thickened. Remove from the heat. Stir in gelatin and lemon juice until gelatin is dissolved. Cool to room temperature.

Prepare pudding mixes according to package directions. Pour into pastry shells. Top with strawberries. Carefully spoon gelatin mixture over berries. Refrigerate until set. Garnish with whipped cream if desired. Yield: 6 pies (8 servings each).



Periodical Postage
Paid at Monte Vista, CO

P.O. Box 3625
Monte Vista, CO 81144

July 2015

**CLOSED
THURSDAY
JULY 2ND
FOR THE HOLIDAY**



POWERING OUR COMMUNITY



SLVREC's offices are open from 7 a.m. to 5 p.m.
Monday through Thursday.
Offices are closed Friday through Sunday.

ENERGY ASSISTANCE

866-HEAT HELP (866-432-8435)
www.energyoutreach.org

SCHEDULED MEETINGS

Board Meeting July 28 @ 3:00 p.m. off-site
The Board of Directors meets the last Tuesday of each
month unless otherwise stated. Members are welcome.

This institution is an equal opportunity employer.



Your Touchstone Energy® Cooperative
The power of human connections®

