

Concern for Community

Member Information



Learning the industry

At left: Alamosa High School senior Carlos Garcia did a field ride-along with our crews helping with a three-phase pole replacement in REC territory.

At right: Del Norte graduate and REC lineworker scholarship recipient Marques Quintana joined crews in Crooked Creek above Creede to move a service.



TOD time change effective Sept. 1

Times are changing! Tri-State Generation and Transmission Association, our wholesale power provider, previously filed to make changes to the rate they charge SLVREC, including changes to the on-peak window. While those changes were not initially approved by the Federal Energy Regulatory Commission, they have now been approved. Accordingly, SLVREC is returning its peak window to match Tri-State's current approved on-peak window. (Letters were also mailed directly to all members affected).

For those members on the A-Time of Day rates, effective Sept. 1, 2024, on-peak hours will be from 4 P.M. to 9 P.M. Monday through Sunday (all seven days of the week). All other hours of the day are off-peak. Meters will be reprogrammed using the advanced metering system starting with Irrigation on Sept. 1. All other meters will be reprogrammed the following week. All meters should be reprogrammed by Sept. 13. If you have newer heaters, it will automatically update the times your heater will charge.

If your unit has an electronic display window, you should see a "P" during on-peak times and "C" during

See TOD continued on Page 4

Member information

Go above and beyond for a safe harvest

Modern farming often relies on data and equipment with GPS and auto-guidance systems. However, even with these modern conveniences, farm workers must remain vigilant. That's because farming is considered one of the most dangerous jobs.

Massive machinery is indispensable to farming, but the same impressive size, height and extensions make them particularly vulnerable to contacting power lines. That's why staying alert, focused and knowledgeable about potential hazards and safety procedures is crucial.

During a busy harvest season, the familiar sights around the farm can easily fade into the background, and farm workers can overlook the power lines overhead. However, failing to notice them can lead to

deadly accidents.

360 Awareness

Awareness of your surroundings, around, above and below, and planning safe equipment routes can significantly reduce the risk of accidents. Even with GPS and auto-steering, it's imperative that farm workers keep a close eye

See **HARVEST** continued on Page 2

THIS ISSUE

Concern for Community/Member info

Conservation/Ciello

Eric Eriksen

Member Info

Recipe/Historical Happenings

SEPTEMBER 2024 | VOLUME 51 | ISSUE 8

HARVEST

continued from page 1

on the equipment's location and are ready to take action if necessary.

Exposed underground powerlines, defective wiring in farm buildings and extension cords are also hazards. Grain bins can pose a potential danger as well. The National Electrical Safety Code requires power lines to be *at least* 18 feet above the highest point on any grain bin with which portable augers or other portable filling equipment are used. If you plan to install new grain bins or you're concerned about the proximity of power lines to existing grain bins, contact San Luis Valley REC.

Smart harvest safety tips

To ensure a safer harvest season, SafeElectricity.org recommends the following tips to avoid electrical accidents on the farm:

Exercise caution near power lines. Be careful when raising augers or the bed of grain trucks around power lines.

Use spotters when operating large machinery near power lines. Ensure the spotters do not touch the machinery while it is moving near power lines.

Lower equipment extensions, portable augers or elevators before moving or transporting equipment. Do not raise equipment, such as ladders, poles or rods into power lines. Remember that non-metallic materials like lumber, tree limbs, ropes and hay can conduct



electricity, especially when damp, dusty or dirty.

Never attempt to raise or move power lines to clear a path. Doing so could result in electric shock or death.

Avoid using metal poles inside bins. Don't use metal poles to break up bridged grain inside or around bins.

Hire qualified electricians. Ensure that qualified electricians handle work on drying equipment and other farm electrical systems.

While rare, the only reason to exit equipment that has come into contact with overhead lines is if the equipment is on fire. However, if it happens, jump off the equipment with your feet together and without touching the machinery and the ground at the same time. Then, still keeping your feet together, hop to safety as you leave the area.

ENERGY EFFICIENCY TIP OF THE MONTH

Now is the time to schedule annual maintenance for your home's heating system. During fall months, HVAC technicians are typically less busy, making this an excellent time for maintenance and any necessary repairs before the winter months.

A qualified technician can clean filters, check for leaks and ensure all system components are working efficiently to keep your home cozy and warm when the temperatures begin to drop.



ciello

This is our why...

"I'm a big time video gamer, and Cielo is PHENOMENAL!"

—Jordan Haynes, Facebook

POWERED BY REC

719.852.3538 • www.cielo.com

Cielo is proud to feature testimonials from our satisfied customers in issues of the Newsboy. Send your testimonials to jalonzo@slvrec.com.



Eric Eriksen

The spotlight

BYOR program announcement

I am often asked, “why hasn’t SLVREC built local utility scale solar generation?” Or “wouldn’t it be great to serve our members with local energy and possibly sell surplus to others?” Those are great questions. And you may have heard the typical response describing how SLVREC is not considering building local utility scale generation at this time due to our contractual obligation with Tri-State. What you may not have heard is that SLVREC is working on your questions and concerns every day for better solutions.

Today, I am excited to share with you that the innovative “Bring Your Own Resource” program was approved by the Federal Energy Regulatory Commission (FERC) on Aug. 2, 2024. This is an industry-first approach for a wholesale energy provider partnering with its members to develop local resources, while not increasing wholesale rates or shifting costs between members. The program is a result of collaboration with Tri-State G&T and its member electric cooperatives like REC working for you.

What is BYOR? It’s a new program providing us with the flexibility to develop our own future resources while honoring our wholesale electric service contract with Tri-State— a pathway to develop up to 40 percent of our own local San Luis Valley renewable energy. Under this program, surplus energy and associated environmental attributes may be sold to Tri-State and integrated onto their multi-state transmission

system. This can support Tri-State’s transition to 85 percent renewable energy by 2031, while also supporting local opportunities. It’s a win-win.

What is next? Now we start evaluating the feasibility of developing local utility scale resources that may deliver reliable, affordable and responsible electricity over the long run and satisfy our agreement with Tri-State. New projects do not always deliver better value, but we will pursue them when they do.

Electronic voting: Are you ready?

More and more rural cooperatives have been breaking tradition by moving away from formal annual meetings and paper ballots. Instead, recent trends include a social meet-n-greet appreciation event in place of a formal event and use of electronic ballots for voting. The purpose is to try and increase member engagement and connection with your local cooperative. Are SLVREC members ready for this? That is the question your Board of Directors is asking. Please share your thoughts at power@slvrec.com. Your input helps.

Rocky Mountain Region Transmission Coalition

The SLVREC team is an active partner in the Rocky Mountain Region Transmission Coalition (RMR-TC) along with state agencies, communities, utilities and industry groups. The purpose is supporting the study and

See SPOTLIGHT continued on Page 4

BOARD OF DIRECTORS

Keenan Anderson, President
719-849-8304

Stephen Valdez, Vice President
719-588-0430

Wade Lockhart, Secretary
719-588-9246

Carol Lee Dugan
719-588-4711

Creede Hargraves
708-638-0039

Scott Wolfe
719-852-0966

Kim Wakasugi
719-588-3440

Email: power@slvrec.com

Your email will be forwarded based on the direction you provide in your subject line.

CEO

Eric Eriksen
719-852-6630

SLVREC Office (toll free)
800-332-7634

SLVREC Office (local calls)
719-852-3538

PUBLISHER’S STATEMENT

The Newsboy (publication #551-450) is an official publication of the San Luis Valley Rural Electric Cooperative, Inc.; 3625 US Hwy 160 W, Monte Vista, CO 81144. The Newsboy is published monthly for SLVREC members. Periodical postage paid at Monte Vista, CO 81144.

Postmaster, send Form 3579 to NEWSBOY, P.O. Box 3625, Monte Vista, CO 81144-3625.

© 2024 San Luis Valley Rural Electric Cooperative. All rights reserved.



www.facebook.com/SLVREC



www.twitter.com/SLVREC



SPOTLIGHT

continued from page 3

development of new transmission projects into the San Luis Valley to unlock remote energy resources, support local resiliency, invigorate economies and aid the national transition to a clean energy future. We've been engaged in seeking grant opportunities for almost two years alongside several local stakeholders. I am happy to share that on July 24, the Department of Energy awarded \$1.7 million to study an optimal transmission route into the Valley with community engagement. This is one of four federal transmission siting and permitting grants awarded across the country. Significant recognition goes

to RMR-TC's hard work to improve power transmission to the region.

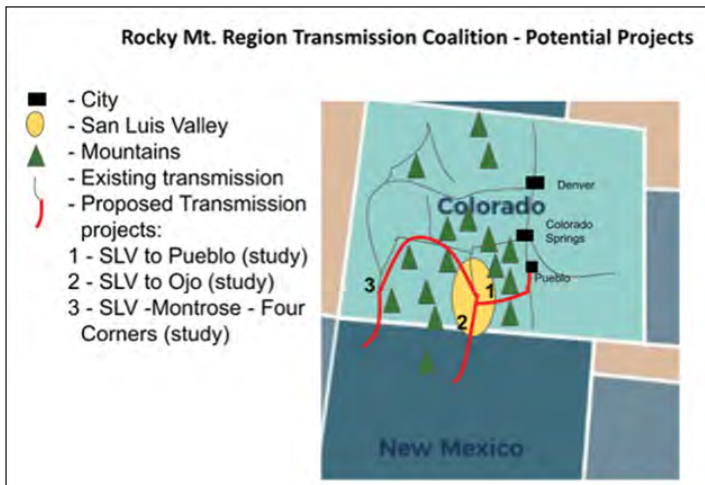
New wholesale formulary rate process

The Federal Energy Regulatory Commission (FERC) approved Tri-State's request to implement a formulary rate process, supporting the transitioning to a renewable energy future. The State



of Colorado has directed a transition to 80 percent renewable energy by 2023. This means that on Jan. 1 each year going forward we'll receive a new rate to purchase wholesale power from Tri-State based on a formula. Read more about the FERC approved wholesale formulary rate online at tristate.coop.

We're here whenever you need us. Connect with us online, in person or through our social media channels. However you choose to reach out, please let us know how we can serve you better.



TOD

continued from page 1

off-peak times. Double check this after Sept. 13th. Please call customer service if these indicators are not displayed during the proper times.

If you have an older heater, models 2001-2006 or model EXT, you will have to manually adjust your time clock. SLVREC will NOT be able to reprogram the manual time clocks for members. For instructions, please refer to www.Steffes.com.

Don't forget there is a list of current electricians that service and maintain ETS units on our website: www.slvrec.com/electric-thermal-storage-ets-heaters. Under the "Services" tab, click "Electric Thermal Storage (ETS) Heaters," on the right there is a sliding window, which features Valley electricians.

If you have further questions, please contact customer service at 719-852-3538 for assistance.

Daily A-TOD Hours

On-Peak Hours	Off-Peak Hours
4:00 PM to 9:00 PM (Monday-Sunday)	All other hours (Monday-Sunday)

Effective September 1, 2024, IRRIGATION and LARGE POWER-A on-peak hours will be from 1 P.M. to 9 P.M. Monday through Saturday. All other hours of the day, including SUNDAYS are off-peak.

Daily IRRIGATION & LP-A TOD Hours

On-Peak Hours	Off-Peak Hours
1:00 PM to 9:00 PM (Monday-Saturday)	All other hours and ALL DAY Sunday



Recipe of the Month

INGREDIENTS

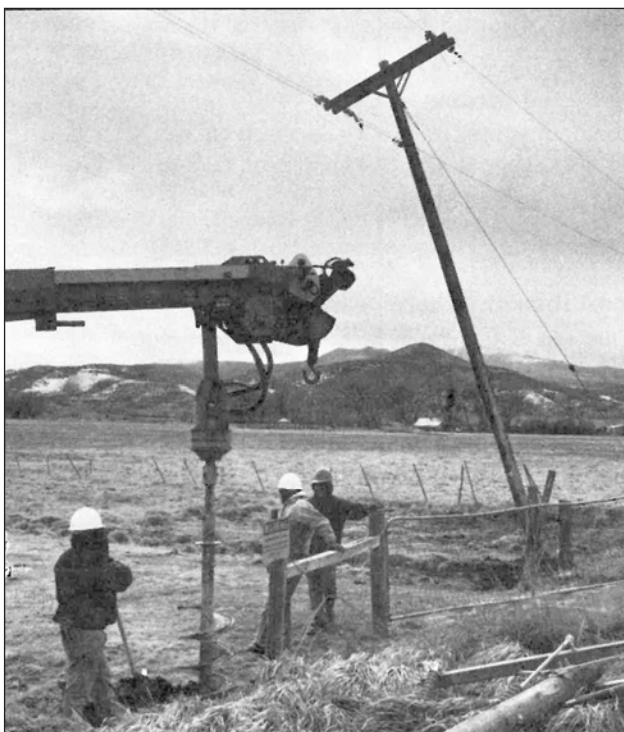
- ¾ c. pumpkin puree
- ½ c. creamy natural peanut butter (or pecan butter or almond butter)
- 2 large eggs
- ¼ c. pure maple syrup
- ¾ c. unsweetened almond milk
- 1 t. vanilla extract
- 2 c. old fashioned rolled oats, *gluten free if desired*
- 1 t. baking powder
- 2 t. cinnamon
- ½ t. nutmeg
- ½ t. allspice
- ½ t. ground ginger
- ¼ teaspoon salt
- ⅓ c. chocolate chips, plus 2 T. for sprinkling on top

BAKED PUMPKIN CHOCOLATE CHIP OATMEAL CUPS

1. Preheat oven to 350 degrees F. Line a 12 cup muffin pan with muffin liners and spray with nonstick cooking spray to prevent oatmeal cups from sticking.
2. In a medium bowl, mix together the pumpkin puree, nut butter, eggs, maple syrup, almond milk and vanilla until smooth and well combined.
3. Next stir in dry ingredients: oats, baking powder, cinnamon, nutmeg, allspice, ground ginger and salt; stir well to combine. Fold in ⅓ cup chocolate chips into batter.
4. Evenly distribute oatmeal batter between muffin liners. Sprinkle extra chocolate chips on top and bake for 25-30 minutes. Drizzle with your favorite nut butter before serving, if desired. Serves 12.

www.ambitiouskitchen.com

Historical Happenings



Work on the system continues unabated, January 1996

TSI, an independent contractor, working for REC, adds a three-phase line west of Del Norte as part of the Co-op's two-year work plan, i.e., system improvement to provide greater capacity and ensure power quality. The old poles carrying the power lines are tilted to allow new poles to be placed without interrupting power.

ciello
 COULD BE AVAILABLE IN YOUR AREA...
 Go online to CIELLO.COM OR
 CALL 719.852.3538

September is National Preparedness Month

Preparedness is a trend that should never go out of style! September is National Preparedness Month, so take a few minutes to assemble an emergency supply kit. You can even get the kids involved for a fun weekend activity.



Periodical Postage
Paid at Monte Vista, CO

SAN
LUIS
VALLEY

REC

A Powerful Connection

ciello

P.O. Box 3625
Monte Vista, CO 81144

September 2024



POWERING OUR COMMUNITY

REC's office is open from 7 a.m. to 5 p.m. Monday through Thursday. We will be closed on Monday, Sept. 2 for Labor Day.

ENERGY ASSISTANCE
866-HEAT HELP (866-432-8435)
www.energyoutreach.org

Your Touchstone Energy®
Cooperative 

SCHEDULED MEETINGS
Board Meeting: Tuesday, Sept. 24, 9:30 a.m.
The REC Board of Directors typically meets the last Tuesday of each month unless otherwise stated. Members are welcome; advance notice required.

This institution is an equal opportunity employer.

